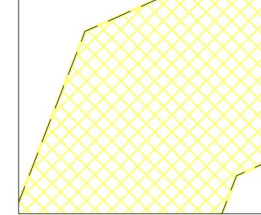
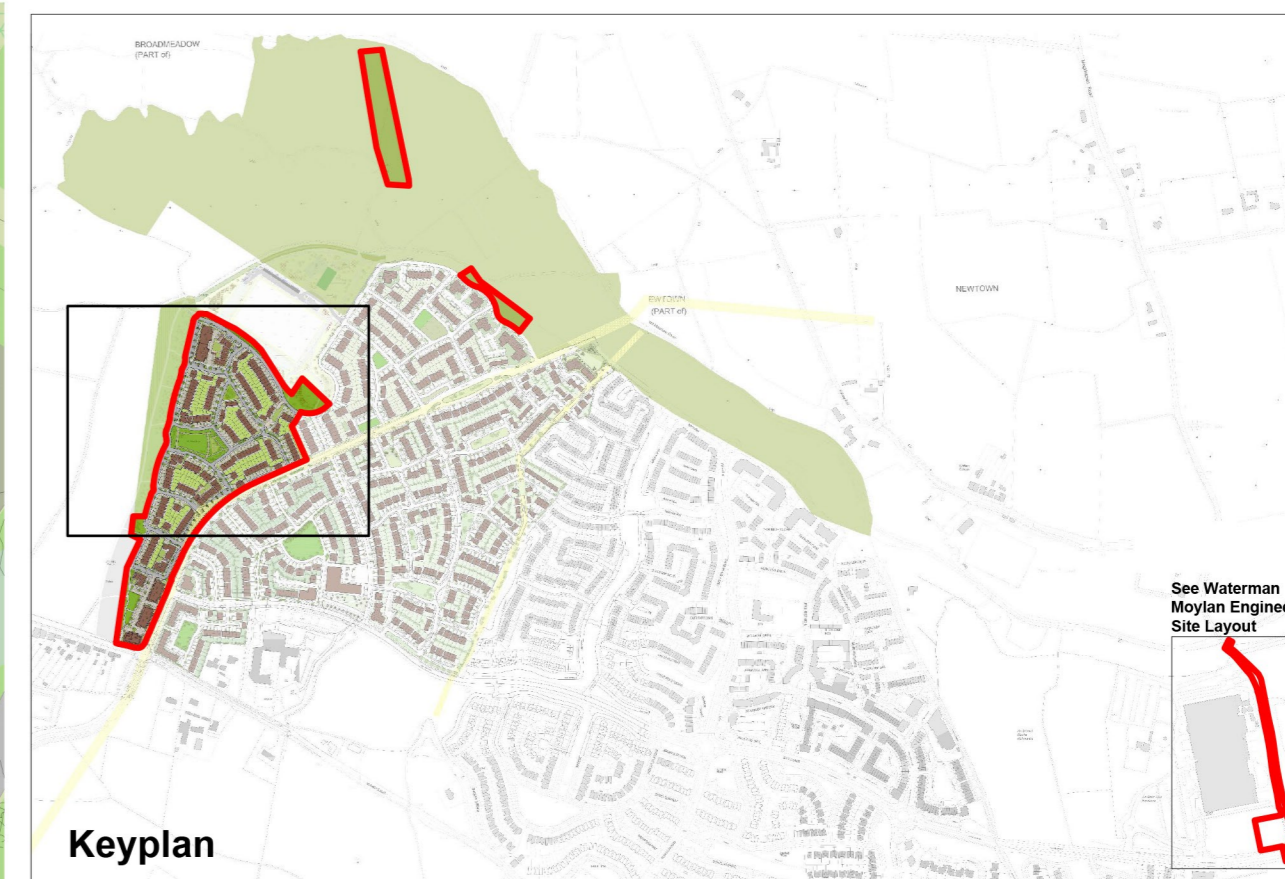


Please refer to Waterman Moylan Engineers' drawings and reports for all proposed road levels, drainage and attenuation details and other engineering works.

Please refer to Doyle + O'Toithigh Landscape Architects' drawings for surface finishes, landscaping details, planting details and specification, boundary details and all proposed levels and contours to public open spaces. (Indicative tree planting shown in rear gardens.)

This drawing is also to be read in conjunction with reports and drawings from the following consultants included with this application:
 Downey Planning and Architecture
 Altamar (ecology)
 Courtney Deery (archaeology)
 Arborist Associates Ltd.
 Sabre Electrical Services Ltd.
 Modelworks

 Yellow hatch denotes a trunk watermain wayleave



© This drawing is copyright
 1. Do not scale this drawing
 2. Errors and omissions to be immediately notified to the Architects
 3. All dimensions to be checked on site

NORTH

© Ordnance Survey Ireland and Government of Ireland Licence No. CVAL50248313

These lands zoned for Regional Park but outside ownership of the Applicant

Western Linear Park
 Open Space (Class 1)
 Attributed to Permitted Development
 See Landscape Architects drawings for details

Open Space 01
 0.0870 ha
 Open Space contiguous to regional park

revisions	date	description
Proposed Site Layout		
Sheet 2 of 4 1:500		
job	scale	date
Development at Oldtown, Swords, Co. Dublin Phase 5	1:500 A0	MAR 22
client	drawn	checked
Gerard Gannon Properties	PG/KL	PG/KL
issue	Planning SHD Stage 3	
CONROY CROWE KELLY ARCHITECTS 65 MERRION SQUARE DUBLIN 2 PHONE 6613990 / FAX 6765715 E-MAIL info@ckk.ie		